

Flowchart of procedures for responding to safeguarding concerns

There is a safeguarding concern about a child, young person or vulnerable adult.

QUESTION

Is there an immediate danger to the learner or a need for emergency medical attention?

Yes

Call emergency services on 999

No

Report your concern to the Designated Safeguarding Lead and make a record using CPOMS. Information is only shared on a 'need to know' basis.

Designated Safeguarding Lead reviews the report

NO REFERRAL

Designated Safeguarding Lead decides a referral is not required. Relevant action taken and monitors the situation within an agreed timescale.

REFERRAL REQUIRED
Designated Safeguarding Lead makes a referral to children's social care for those aged under 18 or to adult social care for those aged over 18.

Referral is made if things escalate.

Social care will decide what response is required.

Local Authority contacts for children
Cornwall –MARU 0300 123 1116
Devon -MASH 0345 155 1071
Plymouth –MASH 01752 668000

Designated
Safeguarding Lead
(DSL)
Malcolm Wake
01566 701827 or
07947 657 861

Local Authority contacts for Adults
Cornwall –0300 1234 131
Devon -0345 1551 007
Plymouth –01752 668000

If the concern is about a staff member/ volunteer in your organisation, the DSL should refer this to the LADO on 01872 326536 who will determine the best route of action to be taken.

If your concern would involve a Prevent/Channel referral, contact: 01392 225130

If you have a concern that a girl has undergone, or is about to undergo FGM, contact:
Emergency services 999
NSPCC 0800 028 3550

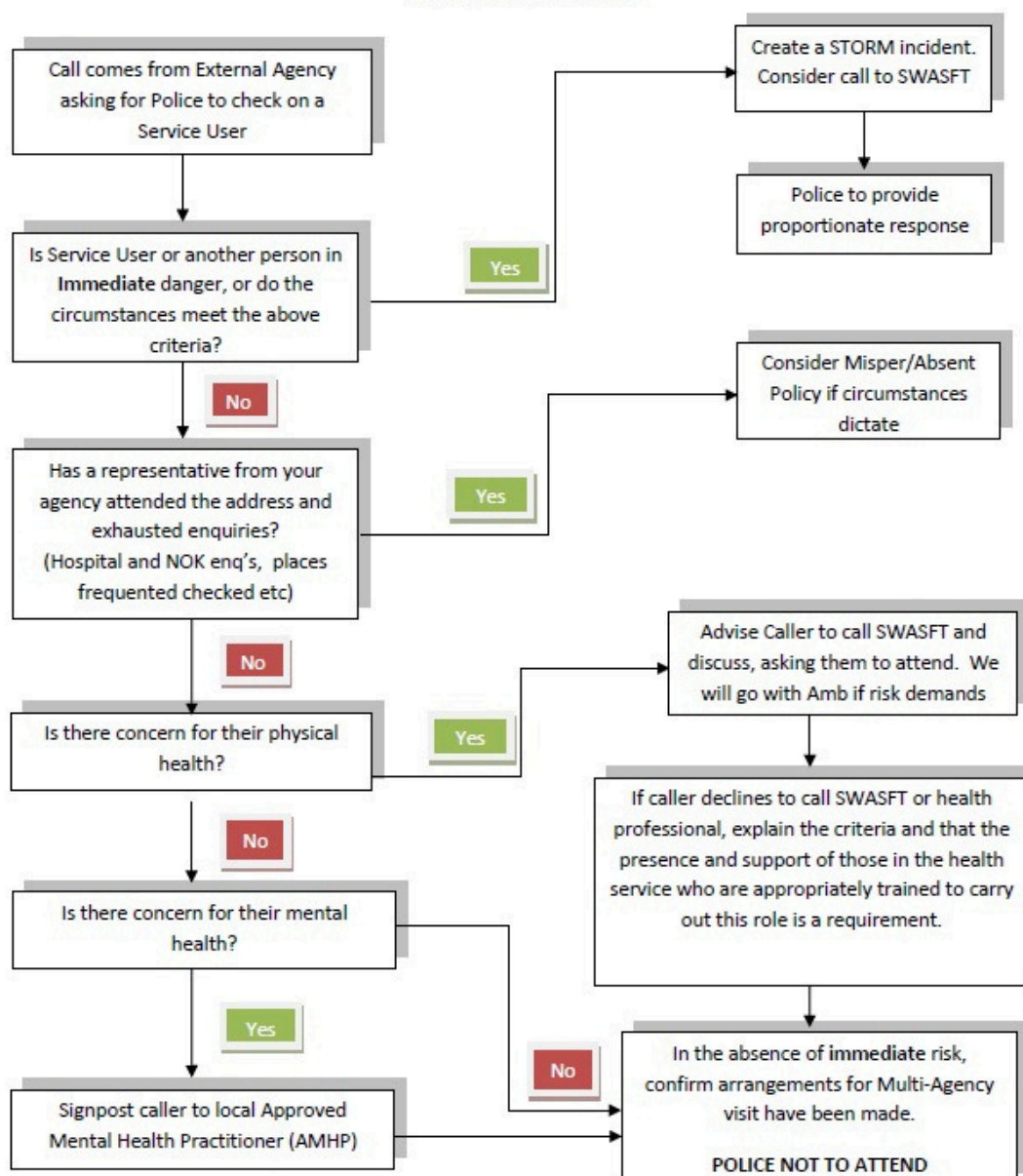
If you can't contact the Designated Safeguarding Lead or Deputy Designated Safeguarding Lead then please call Devon and Cornwall police on 101, or 999 if there is an immediate risk to life. The flow chart below shows the process they follow when responding to calls:

Concern for Welfare Calls – 3rd Party Agencies

Devon and Cornwall Police will respond to requests for assistance from external agencies to conduct welfare checks on vulnerable adults and children where the following criteria apply:

- There is an identifiable and immediate risk to life or property.
- The adult at risk or child is suffering, or is at risk of suffering, immediate and significant harm.
- It is reasonably believed that a crime has been committed or is about to be committed.
- Attendance of a Police Officer is necessary to prevent a Breach of the Peace.

The Force will not carry out checks where an agency makes a request which does not meet any of the criteria as above.



Field	Description
Document title	Safeguarding Flow Chart
Version	4.0
Author	Head of Marketing
Date issued	7.5.25
Status	Approved
Approved by	Head of Centre
Review date	7.5.26
Document location	Document Control SharePoint – Safeguarding